

ESPP Weekly News Roundup

June 17, 2022

ESPP News & Announcements

- [Dr. Tom Dietz ranked among the top global and national social scientists](#)
- [Ph.D. Students Emily Milton Awarded Funding for Research in Archaeology](#)
- [ESPP Fall Courses](#)

Graduate School Announcements

- [Fall 2022 TA Tuition Pool Closes | Due 06-17-22 | 5 PM](#)
- [Professional Development Opportunity: The PILOT Project | Due 06-24-22](#)
- [COVID-19 Guidance for International Travel](#)
- [MSU Graduate Career Advising Dropbox](#)
- [National Graduate Student Crisis Line is Open to Support Students](#)
- [Correction - TA Tuition Pool Fall 2022](#)

Course Announcements

- [Enrollment Open for MSU Online Geography \(onGEO\) Professional Certificate 422 Courses](#)
- [GEO 829: Collection and Analysis of Drone Imagery](#)

Scholarships, Awards, & Fellowships

- [College of Social Science Call for Nominations for AY 2022-23 Dissertation Completion Fellowships: DUE JULY 25, 2022 by Noon](#)
- [NSF: SCAR Fellowship | Due 08-31-22](#)
- [FSP: Fulbright U.S. Student Program | Due 10-11-22](#)
- [FSP: Fulbright-Schuman Postdoctoral Award at the European University Institute \(Florence, Italy\) | Due 09-15-22](#)
- [FSP: Fulbright U.S. Scholars Program-Egypt | Due 09-15-22](#)
- [Google PhD Fellowship | Due 08-31-22 \(at 8:00 AM\)](#)
- [Call for 2022-2023 Page Fellows Program | Due 07-01-22](#)
- [Call for Applications: 2023-24 Azrieli International Postdoctoral Fellowship | Due 11-15-22](#)
- [Army Research Laboratory Distinguished Postdoctoral Fellowship | Due 06-15-22](#)
- [Internship and Fellowship Opportunities at Oak Ridge Institute for Science and Education \(ORISE\)](#)
- [New EPA Research Opportunities](#)

Workshops, Events, & Other Opportunities

- [COGS Leadership Workshop: The Skills of Self-Advocacy | 06-22-22 | 4-5 PM](#)
- [Global Conversations on Postgraduate Education: Exploring Pan-African Connections | 06-29-22 | 9-11 AM](#)
- [CSTAT Seminar: Ten Simple Rules for Initial Data Analysis | 06-29-22 | 4-5 PM](#)

- [COGS Leadership Workshop: Motivation: How to Get the Most out of Your Limited Time | 07-13-22 4-5 PM](#)
- [SAVE THE DATE! MSU Juneteenth Celebration | 06-17-22](#)
- [Navigating the Master's and Early PhD, Hybrid Format | 07-08-22 | 9 AM-12 PM](#)
- [Navigating the Later PhD, Hybrid Format | 07-08-22 | 1-4 PM](#)
- [ETD Formatting Walk-In Help | 06-28-22 - 9:30-11 AM | 07-11-22 - 1 – 4 PM](#)
- [16th Annual Muslim Studies Program Conference | Call for Submissions | Due 08-31-22](#)
- [EGLE 2022 Environmental Emergency Management Conference | June 29-30, 2022](#)
- [Call for abstracts for the 2022 Virtual Great Lakes PFAS Summit | Due 07-01-22](#)
- [Free Online Course for Postdocs: The Postdoc Academy – Building Skills for a Successful Career | July-Aug, 2022](#)
- [NASEM Climate Conversations: Water Justice | 06-22-22 | 3:00-4:00 PM ET](#)
- [Cyberseminar Series - Hydrologic Science and Indigenous Voices | May-June 2022](#)
- [Frontiers in Hydrology Conference | 06/19- 6/24/22](#)
- [Registration for the 2022-23 Graduate Teaching Assistant Orientation and Preparation Program is open starting NOW!](#)
- [Climate Intersections Conference | Duluth, MN | 07/12-14/22](#)
- [ASABE Global Conference - the Sustainable Energy for a Sustainable Future | Costa Rica | 10/24-26/22](#)
- [RSAI Call for submissions: 2022 RSAI Best Dissertation in Regional Science | Due 07-31-22](#)

Job Opportunities

- [Director of College Programs - Au Sable Institute](#)
- [Michigan Sea Grant Director/Professor position](#)
- [College of Nursing seeks Graduate Assistant](#)

Faculty and Other Funding Opportunities

- [Institutionally Limited Funding Opportunities](#)
- [DoS: Inclusive Action for Climate Change](#)
- [BWF: Climate Change and Human Health Seed Grants](#)
- [NIH: Research Coordinating Center to Support Climate Change and Health Community of Practice \(U24 – Clinical Trial Not Allowed\)](#)
- [TP: John and Alice Tyler Award for Environmental Achievement](#)
- [NG: National Geographic Society Grants Program](#)
- [DoS: Professional Development & Exchange for Ukrainian Educators of Preservice Teachers \(U.S. Mission to Ukraine\)](#)
- [DoS: Building Leaders in Cuban Civil Society Program \(Bureau of Western Hemisphere Affairs\)](#)
- [DoS: U.S.-ASEAN Science, Technology and Innovation Cooperation \(STIC\) Program](#)
- [DoS: Countering Threats to Freedom of Expression in Academia](#)
- [DoS: Advancing Cybersecurity Policies in support of an Open, Interoperable, Reliable, and Secure Internet \(Office of the Secretary\)](#)
- [DoS: Smart and Secure Ports Development Program](#)
- [DoS: Solomon Islands – Unexploded Ordnance Cooperation](#)

ESPP News & Announcements

Dr. Tom Dietz ranked among the top global and national social scientists

Congratulations to Professor Tom Dietz! Dr. Dietz, University Distinguished Professor of Sociology, has been ranked as #70 top Social Science and Humanities researcher in the U.S. and #138 in the world by Research.com. Read more at <https://espp.msu.edu/news/2022-06-13.html>.

Ph.D. Student Emily Milton Awarded Funding for Research in Archaeology

Congratulations to ESPP and Anthropology Ph.D. student Emily Milton for receiving funding from the William A. Lovis Research Fund in Environmental Archaeology, the Lynne Goldstein Fellowship, and the Alumni and Friends Expendable Fund for Archaeology. Read more at <https://bit.ly/3MHxWNe>. Way to go, Emily!

ESPP Fall Courses

Register for Fall courses is now open. Available ESPP courses are ESP 801, ESP 803, and ESP 804. See the attached flyers for more details.

Graduate School Announcements

Fall 2022 TA Tuition Pool Closes | Due 06-17-22 | 5 PM

The Graduate Employees Union and Michigan State University agreed to add 500 additional tuition credits to the tuition waiver benefit for teaching assistants. This additional benefit will be in place for 2019-2023. The Fall tuition pool is available to students appointed as teaching assistants in Fall 2022. Applications are due June 17, 2022 by 5 p.m. Apply at <https://grad.msu.edu/tatuitionpool>.

Professional Development Opportunity: The PILOT Project | Due 06-24-22

The Graduate School is accepting applications from graduate students who are interested in participating in an exciting professional development opportunity, "The PILOT Project: Pursuing Intentional Learning in Organizations Together." Throughout a series of speakers and workshops curated for and by program applicants, MSU graduate students will cultivate a reciprocal relationship with partners at MDARD. The program provides peer-to-peer and professional mentorship, and non-academic job market training, as well as an opportunity to bring to a non-academic institution the most current research and Diversity, Equity, and Inclusion resources. Throughout a series of speakers and workshops curated for and by program applicants, MSU participants will cultivate a reciprocal relationship with partners at MDARD. We encourage you to apply to the PILOT Program **by June 24** and join the upcoming panel **on June 22**, "Career Development beyond Academia: A discussion with the Michigan Department of Agriculture and Rural Development." [Learn more and apply here](#).

COVID-19 Guidance for International Travel

To help field questions, Global Safety has developed a [guide with recommended steps and resources](#). This is available as a PDF (see attached) and also is on the Global Safety website at www.globalsafety.msu.edu/positive-COVID-19. The first step is to [call ISOS](#) for guidance.

MSU Graduate Career Advising Dropbox

MSU graduate students can now have their professional documents (resumes, cover letters, etc.) reviewed by a Graduate Career Advisor through the Office of Graduate Career Development electronically and without needing to make an appointment. A response with feedback on your document(s) will be emailed within one week. Simply [complete this form](#). You must be signed into Google via your MSU email address to access the form.

National Graduate Student Crisis Line is Open to Support Students

For some students, the path to completing a graduate degree can sometimes be more difficult than expected and the pressure of personal and academic responsibilities too much to handle. Help is available. The National Graduate Student Crisis Line (**877-GRAD-HLP**) is staffed by trained counselors who understand the pressures. Don't wait until a crisis arrives to call the National Grad Crisis Line. They are available 24/7 to listen, connect and assist you today! The National Graduate Student Crisis Line is part of [Grad Resources](#), a faith-based organization affiliated with the Christian Grads Fellowship.

Correction - TA Tuition Pool Fall 2022

We are issuing a correction in this previously shared news item. This previously stated that the tuition credits are available only to students who were appointed in the Summer semester and that they could only be used for Summer semester credits. That is not accurate. The TA Tuition Pool application for Fall Semester 2022 is now open. The link to the application can be found on the Graduate School web site: <https://grad.msu.edu/TAtuitionpool>. The application deadline is June 17, 2022 at 5 p.m. These tuition credits are available only to students who are appointed as teaching assistants in the Fall semester, and they can only be used for Fall semester credits. They can be used toward required courses that go beyond the 9 credits included in the assistantship benefits. The application must be supported by a faculty letter confirming that the credits are required for the student's program. [The GEU](#) will select which students will receive support through the TA tuition pool, according to the priority categories listed on the [application page](#).

Course Announcements

Enrollment Open for MSU Online Geography (onGEO) Professional Certificate 422 Courses

Enrollment is now open for the [Online Geography](#) (onGEO) Professional Certificate Program offered by the [Department of Geography, Environment, and Spatial Sciences](#) at Michigan State University. These 7-week, non-credit professional development courses can be taken individually or in combination (4) to earn a Professional GIS Certificate. This certificate aims to advance the skillset of professionals currently working in fields that use geospatial technologies. It is also an excellent opportunity for all professionals and others looking to revamp their current careers, earn continuing education or teaching credits, or

simply further their education. See the list of available courses below or visit <https://ongeo.msu.edu/certificates/index.html> for more details. We are pleased to announce the launch of our [brand-new course in Digital Image Processing](#), written by [Dr. David Lusch](#) (Professor Emeritus in [MSU-GEO](#) and [MSU-RS&GIS](#)).

Session 422 (27 June to 12 August 2022)

- [IGT422: Introduction to Geospatial Technology](#)
- [GIS422: Geographic Information Systems](#)
- [CART422: Cartography](#)
- [FAA422: FAA Part 107 Drone Test Prep & Beyond](#)
- Brand NEW: [DIP422: Digital Image Processing](#)

GEO 829: Collection and Analysis of Drone Imagery

The Geography Department is offering a new course this Fall on using drones and processing drone imagery. See the attached for more details and please share widely with anyone who might be interested.

Scholarships, Awards, & Fellowships

College of Social Science Call for Nominations for AY 2022-23 Dissertation Completion Fellowships: DUE JULY 25, 2022 by Noon

Attached is the Call for Nominations for the Dissertation Completion Fellowships for the 2022-23 academic year (Fall 22, Spring 23, and Summer 23). *Please note that there will be ONLY one call for nominations during the academic year.* Please note that the DCF fellowship amount for Fall and Spring semesters will be \$9,000 and Summer semester will be \$7,500 as in the previous year. Additionally, the College will pay for the 1 credit tuition waiver for the semester in which the student defends the dissertation. Students need to do the following: (1) plan on being enrolled during the semester of fellowship receipt (MSU requirement); (2) submit all of the requested documentation with the nomination application; and (3) indicate when they wish to receive the 1 credit tuition waiver and note whether they were considered as an in-state, out-of-state, or international student at time of admission. This will facilitate our processing of the tuition waivers. Please note that late or incomplete nomination applications will not be accepted or reviewed.

NSF: SCAR Fellowship | Due 08-31-22

The Scientific Committee on Antarctic Research (SCAR) is a thematic organization of the International Science Council (ISC). SCAR is charged with initiating, developing and coordinating high quality international scientific research in the Antarctic region (including the Southern Ocean), and on the role of the Antarctic region in the Earth system. For more details, visit <https://www.scar.org/awards/fellowships/information/>.

FSP: Fulbright U.S. Student Program | Due 10-11-22

The Fulbright U.S. Student Program expands perspectives through academic and professional advancement and cross-cultural dialogue. Fulbright creates connections in a complex and changing

world. In partnership with more than 140 countries worldwide, the Fulbright U.S. Student Program offers unparalleled opportunities in all academic disciplines to passionate and accomplished graduating college seniors, graduate students, and young professionals from all backgrounds. Program participants pursue graduate study, conduct research, or teach English abroad. For more details, visit <https://us.fulbrightonline.org/applicants/getting-started>.

FSP: Fulbright-Schuman Postdoctoral Award at the European University Institute (Florence, Italy)

One American scholar will be selected for the Fulbright-Schuman Postdoctoral Award at the European University Institute in Florence, Italy, during the 2023-2024 academic year. The scholar selected for this award is expected to conduct their own research through an affiliation with one of the EUI Departments: Economics, History and Civilization, Law, Political and Social Sciences) or the Robert Schuman Centre for Advanced Studies, which is devoted to interdisciplinary, comparative, and policy research on the major issues on the European integration process. For more details, visit <https://fulbrightscholars.org/award/fulbright-schuman-postdoctoral-award-european-university-institute-florence-italy>

FSP: Fulbright U.S. Scholars Program-Egypt | Due 09-15-22

This U.S. Scholars program provides opportunities for American faculty members, artists, and independent scholars to lecture and/or conduct research at universities or research institutions in **Egypt** for 3 – 9 months. Awards are available in multiple disciplines. See website for details. <https://fulbright-egypt.org/program/us-scholar/>

Google PhD Fellowship | Due 08-31-22 (at 8:00 AM)

MSU may nominate up to 4 students for the Google PhD Fellowship. The Google PhD Fellowship Program was created to recognize outstanding graduate students doing exceptional and innovative research in areas relevant to computer science and related fields. Fellowships support promising PhD candidates of all backgrounds who seek to influence the future of technology. Google's mission is to foster inclusive research communities and encourages people of diverse backgrounds to apply. [Learn more and apply here.](#)

Call for 2022-2023 Page Fellows Program | Due 07-01-22

The PAGE Fellows Program invites graduate students to participate in a yearlong working group in support of collaborative art-making, teaching, writing, storytelling, and co-creating knowledge with and within community. [Learn more here.](#)

Call for Applications: 2023-24 Azrieli International Postdoctoral Fellowship | Due 11-15-22

The Azrieli International Postdoctoral Fellowship has launched its Call for Applications for the 2023–24 academic year. The fellowship offers generous funding and support for 24 international postdoctoral applicants to conduct research in exact sciences, life sciences, humanities, and social sciences at eligible Israeli academic institutions. The online application will be available beginning September 1, 2022. [Learn more here.](#)

Army Research Laboratory Distinguished Postdoctoral Fellowship | Due 06-15-22

The Army Research Laboratory invites exceptional young researchers to apply for an ARL Distinguished Postdoctoral Fellowship. This fellowship provides recipients the opportunity to pursue independent

research while working alongside some of the nation's best scientists and engineers. Applicants must display extraordinary ability in scientific research and show clear promise of becoming outstanding leaders. Successful candidates will have already tackled a major scientific or engineering problem or will have provided a new approach or insight, evidenced by a recognized impact in their field. [Learn more and apply.](#)

Internship and Fellowship Opportunities at Oak Ridge Institute for Science and Education (ORISE)

The Oak Ridge Institute for Science and Education (ORISE) is accepting applications for internship and fellowship opportunities at U.S. Department of Defense research facilities nationwide. These are mostly postdoctoral, but there are opportunities for holders of Bachelors, Masters, and Doctoral degrees. [Learn more here.](#)

New EPA Research Opportunities

The Oak Ridge Institute for Science and Education (ORISE) Internship/Research Participation Programs at the U.S. Environmental Protection Agency (EPA) are educational and training programs designed to provide college students, recent graduates, and university faculty opportunities to participate in project-specific EPA research, current environmental research, and developmental activities. Visit <https://orise.orau.gov/epa/current-research-opportunities.html>.

Workshops, Events, & Other Opportunities

COGS Leadership Workshop: The Skills of Self-Advocacy | 06-22-22 | 4-5 PM

There are many times and places in our lives when we need to speak up for ourselves. Whether it's a difference of opinion with our advisor, an ongoing dispute with loved ones or roommates, or personal differences with colleagues and friends, learning to manage and resolve conflict is an essential life skill. In this workshop, we will talk about some basic principles of productive confrontation and how to apply them across different contexts. [Learn more and register here.](#)

Global Conversations on Postgraduate Education: Exploring Pan-African Connections | 06-29-22 | 9-11 AM

What does the future of international/global partners and students look like? How can we build a network of networks that fosters exchange and coordination across Africa and around the world? How can information sharing lead to new models of collaboration and inform capacity building? This session brings together experts on postgraduate education in Africa in a roundtable discussion format to identify existing networks, share models of success, and provide a foundation for future discussions. [Learn more and register here.](#)

CSTAT Seminar: Ten Simple Rules for Initial Data Analysis | 06-29-22 | 4-5 PM

This is a great opportunity for Graduate Students to get credit for their annual refresher RCR training. Initial data analysis (IDA) is a crucial step and aims for transparency and integrity by providing you with an analysis-ready data set and reliable information about its properties that enables you to perform the

statistical analyses in a responsible manner and interpret the obtained results. [Learn more and register here.](#)

COGS Leadership Workshop: Motivation: How to Get the Most out of Your Limited Time | 07-13-22 4-5 PM

One of the most difficult things about graduate school is having to sustain high levels of motivation for a very long time. If you are feeling your motivation fading and aren't sure how to keep going, you are not alone! In this workshop, we will talk about specific strategies to build and/or recover sustainable motivational structures and practices in your life. [Learn more and register here.](#)

SAVE THE DATE! MSU Juneteenth Celebration | 06-17-22

Join the second annual Michigan State University Juneteenth Celebration on Friday, June 17, 2022, from 5-9 p.m. at the Breslin Center. The celebration's theme of AFROFUTURISM centers Black history to envision futures of Black liberation. The event will feature the Harlem Renaissance and Idlewild student art exhibit and performances, and the Black Wall Street business exhibition to center Black student entrepreneurship. The program will include messages from campus leaders and live music and food. For more information and to RSVP, visit <https://inclusion.msu.edu/awards/Juneteenth/index.html>.

Navigating the Master's and Early PhD, Hybrid Format | 07-08-22 | 9 AM-12 PM

This interactive hybrid writing workshop is designed to help you develop an individualized plan for graduate writing and understanding graduate school. In this 3-hour workshop, plans for time management and working with others, especially during these unprecedented times in higher education, will be the main focus. Participants will create academic timelines for their MA or PhD work at MSU and discuss technologies and habits that can help them stay on task. [Learn more and register here.](#)

Navigating the Later PhD, Hybrid Format | 07-08-22 | 1-4 PM

This interactive, hybrid writing workshop is designed to help you develop an individualized plan for graduate writing, especially comprehensive exams, dissertation proposals, and dissertations. In this 3-hour workshop, the focus will be on developing and maintaining productive and effective writing processes and practices, especially during these unprecedented times in higher education and in society. Participants will explore and share their current writing practices and be given practical writing and revision strategies. During the latter half of the workshop, participants will work on plans for developing and completing their dissertations. [Learn more and register here.](#)

ETD Formatting Walk-In Help | 06-28-22 - 9:30-11 AM | 07-11-22 - 1 - 4 PM

Location: 220 Chittenden, 466 W. Circle Dr. (2nd floor) East Lansing, Michigan 48824

Do you have questions regarding formatting your thesis or dissertation? Stop in during one of our help sessions to talk to Graduate School staff about any specific formatting questions you may have. These are walk-in. No registration is required.

16th Annual Muslim Studies Program Conference | Call for Submissions | Due 08-31-22

Michigan State University is hosting an international conference entitled “Measuring Muslim Publics: Curves, Columns, Spheres and Squares.” This conference investigates who is ‘the public’ in public opinion? What effect does it have on politics? These questions have received a great deal of attention by scholars of American and European contexts where their contributions have taken on a universalistic overtone. Are these generalized assumptions valid in other societies – notably in Muslim-majority contexts? In addressing these questions, this conference aims to contribute to the interdisciplinary study of public opinion and ‘the public’ in Muslim contexts inside and outside of the Muslim world. The organizers welcome abstracts for previously unpublished research that can fall into any of these research streams about public opinion and the public in Muslim-majority contexts or Muslim contexts outside of the Muslim world. It especially encourages papers that blend them or have a comparative geographic scope. Papers that interrogate normative assumptions and methodologies in public opinion research are also encouraged. Junior scholars and post-doctoral researchers are encouraged to submit abstracts for consideration. The deadline to apply is August 31, 2022, and accepted papers will be announced by September 30, 2022. [Click here to submit an abstract.](#)

EGLE 2022 Environmental Emergency Management Conference | June 29-30, 2022

Is your community prepared to handle environmental emergencies such as fires, floods, oil spills, etc.? The Michigan Department of Environment, Great Lakes, and Energy (EGLE) is hosting the [Environmental Emergency Management Conference](#) at the Lansing Center in Lansing, Michigan on June 29-30, 2022 to help communities with preparedness and mitigation, response, and recovery related to incidents impacting the environment and public health. Participants may include federal, state, and local emergency response personnel, public health officials, facility emergency managers, contractors, consultants, academia, or anyone within the emergency response community.

Call for abstracts for the 2022 Virtual Great Lakes PFAS Summit | Due 07-01-22

The Michigan Department of Environment, Great Lakes, and Energy (EGLE) invites you to participate as a presenter at the 2022 Great Lakes PFAS Summit taking place December 5-7 as a virtual event. Per- and polyfluoroalkyl substances (PFAS) continue to present some of the biggest challenges in chemical contamination across the world. States throughout the nation, including the Great Lakes region, are finding PFAS contamination in a growing number of locations where these persistent chemicals pose a threat to human health and the environment. The Great Lakes PFAS Summit will bring together environmental program managers, policy experts, researchers, and contractors from around the Great Lakes region to share new methods of addressing this contamination and present innovative technical solutions developed to address these “forever” chemicals. Participants may include local, state, and federal government officials; environmental consultants and vendors; academic researchers and students; industry managing PFAS contamination; and community organizations. For more details, visit <https://www.surveymonkey.com/r/2022PFASummit-Abstracts>.

Free Online Course for Postdocs: The Postdoc Academy – Building Skills for a Successful Career | July-Aug, 2022

Registration is now open for a free online course from The Postdoc Academy: Building Skills for a Successful Career. The Postdoc Academy provides skill development for postdocs as they prepare to transition into their next career step. Course duration: July 11 – Aug. 28 [Learn more and register here.](#)

NASEM Climate Conversations: Water Justice | 06-22-22 | 3:00-4:00 PM ET

Join us for a conversation about how to ensure all people in the U.S. have access to clean and safe drinking water in a changing climate. Millions of people in the U.S. currently lack access to clean and safe drinking water, particularly in low-income rural areas and in communities of color. Our changing climate creates additional threats, such as droughts that diminish surface water bodies, algal blooms and salt-water intrusion that contaminate water supplies, and floods that overwhelm water treatment facilities. Join us for a conversation about how policies and infrastructure could help address current disparities in access to water and build resilience to the increasing impacts from climate change. Speakers will be announced soon. [Register here](#).

Cyberseminar Series - Hydrologic Science and Indigenous Voices | June 2022

Indigenous leaders in water and hydrologic science explore how hydrological sciences are defined and who is included in that definition. It explores how native american people relate to water, what water issues they think are important, how we can increase inclusivity in the hydrologic sciences community and what challenges and opportunities they face with building resilience to climate change with regards to water. For session information and schedule, visit <https://www.cuahsi.org/cyberseminars/series/hydrologic-science-and-indigenous-voices>.

Frontiers in Hydrology Conference | 06/19- 6/24/22

Take part in the inaugural, community-driven [Frontiers in Hydrology Meeting](#), 19-24 June 2022 in San Juan, Puerto Rico, and online everywhere. This year we will convene around the theme: The Future of Water. Registration is now open. Take advantage of early bird rates by registering now. Early bird rates and guaranteed housing expire on 17 May. In addition to the excellent scientific program, FIHM22 will also host several [field trips](#) that explore Puerto Rico's diverse ecological areas and city life, from kayaking on one of the world's only bioluminescent bays, to a guided tour of historic Old San Juan. There will also be a service activity with ENLACE, an organization devoted to restoring the Martín Peña watershed and empowering the local community. [Financial assistance](#) is available for student and early career attendees.

Registration for the 2022-23 Graduate Teaching Assistant Orientation and Preparation Program is open starting NOW!

Attention Graduate Teaching Assistants! Registration for the GTA Fall Orientation and Preparation Program is open! Whether you are a new, international, or a returning Graduate Teaching Assistant, the [Graduate Teaching Assistant Program \(GTAP\)](#) offers sessions that provide policy training required of everyone and sessions to make you more effective in your teaching, including resources and professional development opportunities. The program will be delivered virtually with both synchronous and asynchronous components. All GTAs are strongly encouraged to attend and need to register before August 3, 2022 to receive all materials and to be able to access all relevant modules on the Learning Management System D2L. This link will give everyone a brief introduction to the GTA Program and to the individual components as described below: <https://grad.msu.edu/gtap>. You can also directly access the registration form here: <https://grad.msu.edu/tapreg>

Climate Intersections Conference | Duluth, MN | 07/12-14/22

This conference has a theme of adapting local communities to extreme weather and creating resilient agricultural systems in a changing climate. The conference covers topics that provide solutions that combat inequity caused by climate change and ensure the well-being of people. In addition, this conference provides an opportunity to connect with water professionals in the area of water, climate, and natural resources within the North Central Region. [Climate Intersections Conference - North Central Region Water Network \(northcentralwater.org\)](https://www.northcentralwater.org/)

ASABE Global Conference - the Sustainable Energy for a Sustainable Future | Costa Rica | 10/24-26/22

A fast-growing world population, estimated to reach 9.1 billion in 2050, coupled with megatrends such as rapid urbanization and diet transformation will require nearly doubling of food production worldwide. While increasing food production is critical, issues such as water and energy security are equally important to ensure sustainability of the global food system while addressing climate change. The goal of the conference is to bring together agricultural and biological engineers and peers from academia, government, and industry including growers/farmers from across the world with local stakeholders to enable interdisciplinary dialogs among international scientists, business owners, and government agents to explore renewable energy technologies and innovations. It is expected that partnerships will be developed among individuals and organizations to address issues and barriers that are most relevant to local/regional energy security. The conference scope includes innovative renewable energy production technologies; agriculture and circular bioeconomy for sustainable energy production; distributed renewable energy systems and global climate change; food-energy-water nexus; social, environmental and economic perspectives of energy security. Please visit the conference website at: www.energy.asabe.org to submit your abstracts. The deadline for abstract submission is April 15, 2022. Conference is being co-chaired by Dr. Ajit Srivastava and Wei Liao from MSU.

RSAI Call for submissions: 2022 RSAI Best Dissertation in Regional Science | Due 07-31-22

The Regional Science Association International (RSAI) invites submissions for the annual competition for the Best Doctoral Dissertation in Regional Science. Regional science is an interdisciplinary field concerned with theory, method, and application of regional, urban and rural, geographic and spatial investigations and analyses. The winner will be decided by the Selection Committee and will receive a cash award of 750 Euros (~\$850). Award announcements will be made at the North American Meetings of the RSAI, where participants in the competition are strongly encouraged to be present. The Selection Committee reserves the right to not make an award. Decisions made by the Selection Committee are final. <http://www.regionalscience.org/index.php/awards/rsai-dissertation-award.html>

Job Opportunities

Director of College Programs - Au Sable Institute

The Au Sable Institute of Environmental Studies ("ASI or Au Sable," www.ausable.org) seeks a full-time Director of College Programs. The person filling this position will be responsible for the overall coordination and management of our curriculum of college courses serving 53 partner Christian colleges and other institutions of higher learning throughout the U.S. and Canada. The position will also teach courses as needed and determine Au Sable's role in providing research opportunities for students from partner schools. The Director of College Programs reports to the Executive Director and works closely

with the Admissions Manager. See the attached for more details or visit <https://www.ausable.org/jobs-au-sable/2022/6/6/director-of-college-programs-au-sable-institute>.

Michigan Sea Grant Director/Professor position

Michigan Sea Grant is seeking a new director. Details are included in the attached job ad. Please circulate to anyone you know who might be interested.

College of Nursing seeks Graduate Assistant

The College of Nursing is seeking a part-time research assistant to work 20 hours per week from August 16 to December 31, 2022. The responsibilities of the Research Assistant will be to support research faculty within the College of Nursing specific to scholarship activities. [Learn more and apply here](#).

Faculty and Other Funding Opportunities

Institutionally Limited Funding Opportunities

Several new funding opportunities have been recently released by federal agencies and foundations. Due dates listed below are internal deadlines.

- [NIH, Director's Early Independence Awards](#) (Due 6/21)
- [NSF, Regional Innovation Engines](#) (Due 7/6)
- [NSF, Research Traineeship \(NRT\) Program](#) (Due 7/12)

Find more opportunities on the [Office of Research and Innovation ILP page](#).

DoS: Inclusive Action for Climate Change

BWF: Climate Change and Human Health Seed Grants

The Burroughs Wellcome Fund aims to stimulate the growth of new connections between scholars working in largely disconnected fields who might together change the course of climate change's impact on human health.

Projects may include, but are not limited to:

- Linking basic/early biomedical science to climate-focused thinking
- Sustainability in health care systems, health care delivery outside institutions, and biomedical research
- Health impacts and health systems impacts of extreme weather events and other crises
- Outreach, communication, and education around climate and human health

Award Size: \$2,500 up to \$50,000

Deadline: June 29, 2022 (quarterly deadlines through 8/30/2023)

[NIH: Research Coordinating Center to Support Climate Change and Health Community of Practice \(U24 – Clinical Trial Not Allowed\)](#)

This Funding Opportunity Announcement (FOA) solicits applications to develop a Research Coordinating Center (RCC) to support the development of an NIH CCH-COP by managing and supporting current and future CCH research and capacity building efforts.

The RCC will create a robust, inclusive CCH-COP that fosters collaboration, capacity building, innovation and research that aligns with the NIH CCH initiative. The RCC will offer opportunities for collaboration between multiple disciplines required to conduct solutions-driven research on the health impacts of climate change.

Applications are sought from multidisciplinary teams with national and global expertise in climate change and population health research and with strengths in leadership, project management, and engagement of multi-site, multi-disciplinary research teams; developing and maintaining cloud-based systems that allow for data management, integration, and sharing; multidisciplinary and community-based partnership and resource development; and supporting research education and capacity building efforts.

The RCC will mobilize and support the CCH community of practice and facilitate CCH research through the following functions:

Domestic and Global

- Develop/Adapt/Leverage curricula, educational content, learning modules, that are culturally, linguistically, and literacy-appropriate to increase awareness and education about the health implications of climate change especially among underserved communities.
- Facilitate training, mentorship, and professional development in CCH research, especially among professionals from underrepresented groups.
- Develop a plan for research and training opportunities such as pilot research projects and training support that aligns with CCH research priorities.
- Share capacity-building best practices.
- Consider and facilitate strategies, approaches, processes, and best practices to promote the research community's capacity to develop and implement time-critical health research, as well as longer-term studies, in response to extreme weather disasters, wildfires, and other health emergencies

Global

- Collaborate with the Data Management team to make data management and research tools, including infrastructure, and datasets accessible to global members of the CCH-COP.
- Assist global CCH recipients in identifying research partners and resources to enhance the recruiting/hiring of investigators with climate change and public health research experience.
- Develop and deliver distance learning and mentorship opportunities to facilitate collaboration across the CCH-COP research network and other partners.
- Facilitate working groups on topics specific to unique global health challenges and to conducting CCH research in Low and Middle-Income Countries (LMIC) impacted by ongoing climate events and risks.
- Promote collaborations between LMIC scientists and researchers from other parts of the world and encourage intellectual exchanges and data sharing.

Award Size: varies with NIH agency (\$25,000 up to \$500,000)

Letters of Intent are due: July 25, 2022

[TP: John and Alice Tyler Award for Environmental Achievement](#)

Established in 1973 by the late John and Alice Tyler, the Tyler Award for Environmental Achievement is one of the first international premier awards for environmental science, environmental health, and energy.

Recipients encompass the spectrum of environmental concerns, including environmental policy, health, air and water pollution, ecosystem disruption and loss of biodiversity, and energy resources.

Award Size: \$250,000

Nominations are due: August 12, 2022

[NG: National Geographic Society Grants Program](#)

The National Geographic Society's Grants Program provides seed funding and support to early career individuals, as well as those more advanced in their careers, who are working to address critical challenges, advance new solutions, and inspire positive transformation across **all seven continents**.

Funded projects will incorporate science, storytelling, and/or education, and must align with one or more of the Society's five focus areas:

- Ocean
- Land
- Wildlife
- Human History & Cultures
- Human Ingenuity.

Award Size: Up to \$20,000 (Level I funding); Up to \$100,000 (Level II funding)

Deadline: October 12, 2022

[DoS: Professional Development & Exchange for Ukrainian Educators of Preservice Teachers \(U.S. Mission to Ukraine\)](#)

Award recipients will consult closely with PAS Kyiv throughout the development, implementation, and evaluation of the program. The grantee will be responsible for providing a high-quality, coherent online professional development program for selected instructors at pedagogical colleges and universities in **Ukraine**, to be accompanied by an approximately 3-week professional exchange trip to the United States offered to a subset of participating instructors (8-10).

Program Objectives:

- Provide professional development opportunities for instructors for preservice English language teachers at pedagogical colleges and universities.
- Strengthen people-to-people ties between the United States and Ukraine through activities, information sharing, and experiences between American experts and target audiences that increase mutual understanding between the people of the United States and Ukraine.
- Build capacity of Ukrainian pedagogical colleges and universities through long-term, self-sustaining relationships and institutional linkages between American and Ukrainian individuals and organizations.

The goal of this program is to provide space for dialogue between the peoples of both countries and foster American engagement with a wide range of Ukrainian audiences through English language teaching and learning.

Participants and Audiences:

Ukrainian instructors of methodology for preservice English language teachers in Ukraine; approximately 30 instructors will be audience for online professional development, of which approximately 10-12 will participate in the exchange.

Award Size: \$300,000

Deadline: July 11, 2022

[DoS: Building Leaders in Cuban Civil Society Program \(Bureau of Western Hemisphere Affairs\)](#)

The Building Leaders in Cuban Civil Society project will support the participation of cohorts of young emerging leaders from Cuban civil society in a professional development project, ideally for four to six months with an alumni follow-on component.

The project will include bringing two to three small cohorts of civil-society leaders and/or young professionals to a third country, for no longer than three weeks per cohort, for in-depth training in required skillsets for fostering grassroots civil society in **Cuba** as a means of developing the skills needed to build up Cuban democracy.

Such skills may include, but are not limited to:

- communications for spreading democratic ideals
- presenting democracy-building and human rights ideas to audiences
- starting or growing community-level organizations related to democracy-building

Targeted skills:

- to develop could include reaching remote areas to spread ideas related to democracy or democratic principles
- presenting a program or project idea to potential NGO partners related to democracy-building
- learning international communication tools and operating in the international organization community
- and/or assessing unmet community needs,
- leadership and team building
- strategic communications
- office skills
- organizational effectiveness
- practical application of skills
- or other topics consistent with the LIBERTAD Act

Award Size: \$543,125

Deadline: July 22, 2022

[DoS: U.S.-ASEAN Science, Technology and Innovation Cooperation \(STIC\) Program](#)

The U.S. Department of State, Bureau of East Asian and Pacific Affairs (EAP) announces an open competition for organizations interested in submitting applications for a regional project that strengthens science, technology and innovation cooperation between the United States, the Association of Southeast Asian Nations (ASEAN) and ASEAN Member States. The ASEAN Member State are: **Brunei, Burma, Cambodia, Indonesia, Laos, Malaysia, Philippines, Singapore, Thailand, and Vietnam.**

The U.S.-ASEAN Science and Technology Innovation Cooperation Program (STIC) will support innovative projects in areas that facilitate strategic connections between public and private laboratories, academia, policy makers, industries, and business associations in the United States and ASEAN. Projects may facilitate substantive policy exchanges with deliverable policy documents and recommendations where feasible.

Project implementers should also be prepared to recommend topics (in cooperation with U.S. government representatives) for substantive exchange and recommendations.

Proposals must address one or more of the follow areas:

- Marine science and technology;
- Space technology and applications;
- Microelectronics and information technology;
- Biotechnology;
- Food science technology;
- Materials science and technology;
- Meteorology and geophysics;
- Sustainable energy research; and
- Infrastructure systems that support resource recovery and reuse.

Award Size: \$3,456,250

Deadline: July 11, 2022

[DoS: Countering Threats to Freedom of Expression in Academia](#)

The Global Engagement Center (GEC) at the Department of State, announces the Notice of

Funding Opportunity (“NOFO”) for Countering PRC Threats to Academic Expression Abroad. The agreement awarded will use funds from the U.S. Fiscal Year 2021 Economic Support Fund (ESF). Proposals should suggest implementation locations globally and must provide clear justifications for each proposed country.

The Department of State seeks proposals to develop a capacity-building effort to improve protections of freedom of expression in establishments of higher education from PRC- and CCP linked efforts to manipulate or suppress academic expression. The implementer will rigorously assess Beijing’s problematic influence affecting foreign universities, develop best practices to address such coercive and corrupting behavior, and build the capacity of key beneficiaries to protect academic freedom and freedom of expression.

A successful program will also strengthen the ability of key beneficiaries from a cohort of foreign academic institutions to understand the scale of PRC- and CCP-linked efforts to undermine academic integrity and to bolster their capacity to mitigate the adverse effects of such behavior. Lastly, the implementer will co-develop a sustainable mechanism with the U.S. government and likeminded partners to build the capacity of other universities and non-governmental organizations to join the initiative.

Program Objectives:

1. Increase the capacity of key beneficiaries to mitigate Beijing’s coercive and corrupting influence on academic expression abroad, and produce recommended mitigation measures.
2. Increase the resilience of foreign academic institutions to restrictions on freedom of expression by enabling relevant targeted foreign likeminded governments and other academic partners outside of the initial foreign academic cohort to adopt consensus-based best practices.

Award Size: \$1.5M

Deadline: July 15, 2022

[DoS: Advancing Cybersecurity Policies in support of an Open, Interoperable, Reliable, and Secure Internet \(Office of the Secretary\)](#)

The U.S. Department of State, Bureau of Cyberspace and Digital Policy, International Cyberspace Security (CDP/ICS) unit, announces an open competition for organizations interested in submitting applications for projects that support and encourage the adoption and/or promulgation by partner nations of cybersecurity policies, legal frameworks, and standards consistent with the United States’ efforts to promote an open, interoperable, reliable, and secure Internet. Activities should target foreign assistance eligible civilian government officials.

Suggestions for beneficiaries of the cooperative agreement award may also be provided by the State Department and will be drawn from countries that: 1) may be at particular risk for emulating certain legal or regulatory approaches similar to the cybersecurity policies of authoritarian governments (e.g., the People's Republic of China); and/or 2) could be force-multipliers in the United States' efforts to encourage more open and progressive cyber policy approaches (e.g., in countries that are actively developing their own laws and frameworks, particularly in the developing world). It is expected that the prospective grantee coordinates closely with CDP/ICS to appropriately target the support.

All research and analysis products from this cooperative agreement, including an externally facing website, shall be made publicly available.

Project activities may include, but are not limited to:

- In-depth research and/or analysis that explores factors that drives certain governments to emulate authoritarian approaches to cybersecurity policy, related legal/regulatory frameworks and technical standards in their domestic policies; what foreign governments are most at risk for emulating these or similar approaches; and what governments could be potential influencers or force-multipliers in U.S. efforts to encourage more progressive policies, particularly in the developing world, in order to inform the capacity building activities for target beneficiaries.
- A combination of delivery mechanisms to directly engage civilian government officials on U.S. values and Internet governance approaches, including, but not limited to, face-to-face workshops, scenario-based exercises, virtual education, facilitated peer-to-peer learning, etc.
- Equipping civilian government officials to develop effective collaboration and consultative processes between governments and the private sector, non-governmental organizations, and other relevant stakeholders when developing domestic policies and regulations.
- Raising awareness and sharing information on the broader political, economic, and strategic interests driving authoritarian policies and the limitations of those approaches; and raising awareness of alternative policies and approaches.
- Developing practical strategies to mitigate the driving forces behind the adoption of authoritarian approaches.

Award Size: Up to \$1M

Deadline: July 28, 2022

DoS: Smart and Secure Ports Development Program

The Bureau of **East Asian and Pacific** Affairs (EAP) Office of Economic Policy at the U.S. Department of State (DOS), announces this Notice of Funding Opportunity (“NOFO”) for the “Smart and Secure Ports Development Program.”

The Indo-Pacific has the greatest infrastructure gap of any region on earth. Competitors recognize this and have sought to exploit the gap through infrastructure and connectivity financing and assistance that often entails sub-standard labor and environmental practices, loads recipients with unsustainable debt, and exposes recipients to cyber vulnerabilities.

Countries in the region already provide substantial infrastructure assistance throughout the region, including through official development assistance, debt financing, and foreign direct investment. This Administration is committed to promoting quality investment in infrastructure in the Indo-Pacific region and around the world. To meet these goals, the State Department seeks to support improvements to the region’s business environment; provide foreign assistance for infrastructure development and capacity building; promote standards for quality infrastructure investment; and catalyze private sector investment.

The program will offer three quarterly training events in the recipient country. The three quarterly events will consist of project-specific training targeting authorities responsible for infrastructure, investment, and cyber policymakers.

- The first event will be an interactive training exercise on capital investments and infrastructure bankability involving a hypothetical investment and the inter-governmental steps taken to manage the vetting process, with a spotlight on a greenfield port project or brownfield expansion of existing infrastructure. Implementers will advise on approaches that government officials can leverage to ensure their ports remain economically viable and secure, thereby increasing their competitiveness and attracting trusted investors through good governance mechanisms that benefit all stakeholders.
- The second event will focus on cyber capacity building in a highly trafficked port, which will consist of a cyber resilience workshop and culminate in a simulated cyber-attack against critical infrastructure to implement lessons learned.
- The third event will focus on future proofing and port automation to increase efficiency and bankability in an aging or damaged port which could benefit from digitization. This last event will culminate in a webinar that will allow relevant government officials to connect with industry providers capable of implementing solutions for identified opportunities, challenges, and vulnerabilities.

Award Size: \$869,135

Deadline: August 5, 2022

DoS: Solomon Islands – Unexploded Ordnance Cooperation

The U.S. Department of State, Bureau of Political-Military Affairs, Office of Weapons Removal and Abatement (PM/WRA) is pleased to invite eligible organizations to submit applications for a cooperative agreement to assist in technical and non-technical survey, national capacity support to include database completion and management, humanitarian mine action, and/or explosive ordnance risk education programs in the **Solomon Islands** during fiscal year 2023.

For the FY 2023 funding cycle, PM/WRA is prioritizing:

- Technical and Non-technical survey
- National unexploded ordnance (UXO) database support and management
- Clearance of landmines and other explosive remnants of war (ERW)
- Return of land and infrastructure to productive use
- Technical advice in explosive ordnance disposal (EOD) and explosive hazards response tasks (see below sections)
- Host nation capacity development to international mine action standards (IMAS)
- Explosive ordnance risk reduction (EORE)

Award Size: Up to \$1M

Deadline: September 16, 2022



ESP 801: PHYSICAL, CHEMICAL, AND BIOLOGICAL PROCESSES OF THE ENVIRONMENT



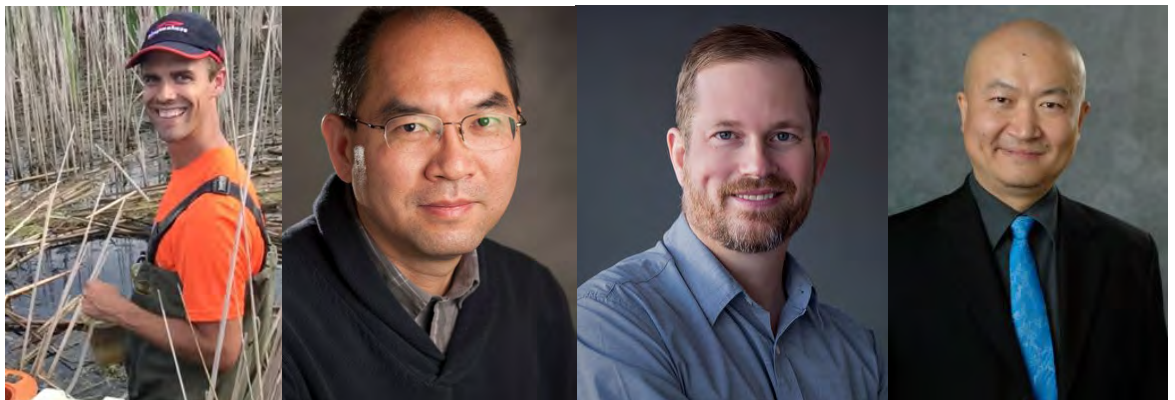
“Physical, Chemical, and Biological Processes of the Environment” has been redesigned to provide students who have disciplinary training in social sciences with a broad overview of environmental science from the perspective of natural sciences and engineering. ESP 801 includes four modules: Environmental Geosciences, Biology/Ecology, Environmental Chemistry, and Environmental Engineering that are taught by four MSU instructors. An environmental case study, a research proposal or a similar interdisciplinary project serve as a crosscutting theme for the course and a common point of reference for learning in ESP 801 and ESP 802. As a counterpart course to ESP 801, ESP 802 is also structured in a modular fashion but focuses on social aspects of environmental problems. ESP 801 and ESP 802 build a foundation for an integrative experience in the capstone ESP 804 course where students, having taken ESP 801 or ESP 802 or both of these classes, work on team-based projects that span the social/natural science spectrum. The new curriculum design reflects ESPP’s objective of providing an interdisciplinary preparation to a cohort of students from diverse backgrounds pursuing an interest in environmental science and policy.

FALL 2022

Anthony Kendall
Daniel Kramer
Hui Li
Wei Liao

MON, WED

12: 40-2:00 PM





ESP 803: HUMAN AND ECOLOGICAL HEALTH ASSESSMENT AND MANAGEMENT



This course provides concepts and techniques used to evaluate human and ecological health impacts from anthropogenic activities as well as a focus on policy formulation and management strategies to mitigate health effects. This course is designed for students with a familiarity with the basic concepts of physics, chemistry and biology of environmental processes, and the relationships between human systems and the environment.

FALL 2022
Karen Chou

MONDAYS
1:50-4:40 PM





ESP 804: Environmental Applications and Analysis Lecture



This course provides the opportunity to apply knowledge learned in previous ESP courses. Global, regional and local environmental issues will be presented and explored. Class projects will be identified from these issues. Students will be assigned projects and will use a systems approach to identify and solve environmental problems associated with the assigned issues. This course is designed for graduate students with ecology, biology, physical, or social science backgrounds seeking an interdisciplinary, environmental science approach to problem solving.



FALL 2022
Joe Hamm

WEDNESDAY
3:00-5:50 PM





ENVIRONMENTAL SCIENCE AND POLICY PROGRAM FALL 2022 COURSE OFFERINGS



ESP 801: PHYSICAL, CHEMICAL, AND BIOLOGICAL PROCESSES OF THE ENVIRONMENT **INSTRUCTORS:** Anthony Kendall, Daniel Kramer, Hui Li, Wei Liao | Mon,Wed: 12:40-2:00 PM

This course provides students who have disciplinary training in social sciences with a broad overview of environmental science from the perspective of natural sciences and engineering. Includes four modules: Environmental Geosciences, Biology/Ecology, Environmental Chemistry, and Environmental Engineering that are taught by four MSU instructors. An environmental case study, a research proposal or a similar interdisciplinary project serve as a crosscutting theme for the course and a common point of reference for learning in ESP 801 and ESP 802. As a counterpart course to ESP 801, ESP 802 is also structured in a modular fashion but focuses on social aspects of environmental problems. ESP 801 and ESP 802 build a foundation for an integrative experience in the capstone ESP 804 course where students, having taken ESP 801 or ESP 802 or both of these classes, work on team-based projects that span the social/natural science spectrum. The curriculum design reflects ESPP's objective of providing an interdisciplinary preparation to a cohort of students from diverse backgrounds pursuing an interest in environmental science and policy.

ESP 803: HUMAN AND ECOLOGICAL HEALTH ASSESSMENT AND MANAGEMENT **INSTRUCTOR:** Karen Chou | Monday: 1:50-4:40 PM

This course provides concepts and techniques used to evaluate human and ecological health impacts from anthropogenic activities as well as a focus on policy formulation and management strategies to mitigate health effects. This course is designed for students with a familiarity with the basic concepts of physics, chemistry and biology of environmental processes, and the relationships between human systems and the environment.

ESP 804: ENVIRONMENTAL APPLICATIONS AND ANALYSIS **INSTRUCTOR:** Joe Hamm | Wednesday: 3:00-5:50 PM

This course provides the opportunity to apply knowledge learned in previous ESP courses. Global, regional and local environmental issues will be presented and explored. Class projects will be identified from these issues. Students will be assigned projects and will use a systems approach to identify and solve environmental problems associated with the assigned issues. This course is designed for graduate students with ecology, biology, physical, or social science backgrounds seeking an interdisciplinary, environmental science approach to problem solving.





Au Sable Institute

The Au Sable Institute of Environmental Studies (“ASI or Au Sable,” www.ausable.org) seeks a full-time Director of College Programs. The person filling this position will be responsible for the overall coordination and management of our curriculum of college courses serving 53 partner Christian colleges and other institutions of higher learning throughout the U.S. and Canada. The position will also teach courses as needed and determine Au Sable’s role in providing research opportunities for students from partner schools. The Director of College Programs reports to the Executive Director and works closely with the Admissions Manager.

Job Title

Director of College Programs

Salary and Benefits

Annual salary is commensurate with qualifications and experience, ranging from \$60,000 to \$71,000. The position qualifies for benefits, including healthcare coverage and retirement contributions.

Applications

Review of applications will begin July 1 and continue until the position is filled.

Location

While it is preferred that the position be based year-round out of our Great Lakes office, we will consider candidates who work September to April from a remote location and spend the summers (May to mid-August) on-site here in northern Michigan. Housing will be provided during the summer months for the employee and immediate family.

Start date

Our strong preference is that this position can begin in Fall 2022. However, we will consider applicants who are not able to begin until early 2023.

About Au Sable

At ASI, we believe Christians should be leading the way in solving the earth’s toughest environmental challenges. Through hands-on learning in the outdoors, engaging professors who integrate faith into their instruction, and a supportive community of friends, we inspire and educate students to serve, protect, and restore God’s earth. We accomplish our mission through various programs including a college academic program which supports students from our 53 partner Christian colleges and universities and other institutions of higher learning. ASI currently offers 25 university-level courses each summer at multiple locations in the United States (northern Michigan and Pacific Rim) and in Costa Rica (www.ausable.org/college), and online. Twenty-two campus based courses, offered in a 3-week May Session or in two 5-week summer sessions, are intentional in providing field-intensive (>50% of course time outside the classroom)

and skills-based experiences through small class sizes that prepare students for careers or further study in environmental vocations. We are a financially healthy organization with a committed board, a growing group of generous donors, and are positioned for many more years of mission delivery.

Job Responsibilities

- In all aspects of the job, share a personal commitment to the Christian faith and to the biblical principles of Creation care.
- Coordinate and manage Au Sable's college program, including addition, revision, or deletion of courses and elements of the certification program.
- Assess the courses and topics needed at our partner colleges and develop creative delivery options to meet student needs, potentially including online, field, hybrid, summer, and semester programs.
- Supervise and support Au Sable teaching faculty in delivery of courses. Lead faculty hiring and retention decisions.
- Play an active role in Au Sable's commitment to diversity and inclusion, including a desire to attract more diverse students and faculty.
- Develop supportive relationships with Faculty Representatives and gain an understanding of their environmental programs and curriculum.
- Determine Au Sable's role in research and pursue opportunities to provide research experiences for students from partner schools.
- Evaluate and manage existing partnerships with Pacific Rim and Costa Rica campus locations.
- Review and evaluate student applications for admission and scholarship decisions.
- In collaboration with the Admissions Manager, schedule and facilitate college visits and Zoom sessions to meet with prospective and enrolled students.
- Manage partnership agreements with existing school partners and pursue new partnership opportunities with other institutions.
- Organize and manage the annual Academic Council on Au Sable's campus (held last weekend in September).
- In partnership with the Executive Director, other staff, and the Board of Trustees, implement goals of the strategic plan and adhere to Board-approved budget for the college program and organization. Participate in board meetings and keep board apprised of key metrics of success related to the college program.
- Keep current on trends in Christian higher education and off-campus study programs.
- Performs other job duties as assigned.

Qualifications and Experiences

The ideal candidate should possess a PhD in biology, environmental science, or a related field, have work experience in an academic setting, and have proven ability to cultivate relationships with undergraduate students, faculty and administration. Highly desirable experiences include: effectiveness in undergraduate teaching; professional mentoring of faculty and colleagues; research experience; desire and ability to effectively integrate Christian faith with teaching and science.

Additional Qualifications

- Strong commitment to Au Sable's mission with a demonstrated commitment to the Christian faith.
- Professional and pleasant demeanor, collegiality, creativity, good interpersonal skills, and desire to humbly serve Faculty Representatives and undergraduate students who may hold diverse views.
- Demonstrated standard of excellence with attention to detail and accuracy.
- Proven ability to work independently and be self-directed while collaborating well with others in a team setting whether in-person or remote.
- Passion for serving undergraduate college students and helping them meet personal and educational goals.
- Ability to organize priorities, with keen attention to detail and deadlines.
- Ability to effectively manage budgets and finances, including administration of grants and scholarships.

Diversity, Equity and Inclusion

ASI is committed to combating racism, sexism, and other systems of oppression. We strongly encourage applications from people of color, women, persons with disabilities, and all individuals who will contribute to the excellence of the Institute. Au Sable does not discriminate on the basis of race, color, national origin, sex, age, disability, or status as a veteran in any of its policies, practices, or procedures.

Application Process

Review of applications will begin July 1 and continue until the position is filled. Please send an e-mail with an attached cover letter and resume that clearly states your interest and qualifications for this position to: jon.terry@ausable.org. Please do not send any letters of recommendation at this time. Selected applicants will be asked to provide three professional references who are able to address relevant experience, and one pastoral reference who is able to address Christian commitment and maturity. Additional information, including academic transcripts, may be requested during the review process.

Questions regarding the position or assistance for persons with disabilities can be made to:

Jon Terry
Executive Director
Au Sable Institute of Environmental Studies
7526 Sunset Trail NE
Mancelona, MI 49659
Cell: 231-881-6402
e-mail: jon.terry@ausable.org

Open Position: Michigan Sea Grant Director and Tenured Faculty Position at the University of Michigan

The University of Michigan is seeking an associate or full professor to lead the Michigan Sea Grant (MISG) program into its next decade of excellence. This is a full-time, 12-month tenured faculty position with a 50% administrative effort as Director. The candidate will teach a reduced course load, in line with the administrative duties of the position. This position will be housed in the School for Environment and Sustainability (SEAS) and will coordinate closely with Michigan State University in managing the MISG program. We are open to faculty from a range of disciplines and areas of expertise. This can include disciplines within the natural sciences, social sciences, or coupled natural-human systems. We are especially interested in faculty with demonstrated research expertise in the ecosystems of the Great Lakes, broadly construed.

MISG is a cooperative program of the University of Michigan and Michigan State University and is part of a national network of 34 Sea Grant College Programs organized under NOAA. Through research, education, and outreach, MISG is dedicated to the protection and sustainable use of the Great Lakes and coastal resources. The Director will provide overall leadership for MISG, which oversees a total annual budget of approximately \$2.2 million and includes both NOAA and external competitive awards. In addition, the director will oversee the Michigan Sea Grant management team, which includes representation of the Associate Director and Extension Program Leader from Michigan State University, and will work with a regional NOAA Program officer.

SEAS' mission is to contribute to the protection of the Earth's resources and the achievement of a sustainable society. The School contributes new scientific knowledge, visionary leadership, and trained professionals toward that end. The faculty of the School is diverse, with natural scientists, social scientists, engineers, and designers working collectively in an integrative setting. A professional school set within a major research university, SEAS provides a model of interdisciplinary and applied research and a focal point of research and teaching on sustainability. As noted, the director will also teach courses, but at a reduced course load, given the administrative and leadership responsibilities of this position.

To apply, submit application materials in Interfolio, via this link: <http://apply.interfolio.com/107687>

Applications should include (1) a brief cover letter; (2) CV; (3) a personal statement describing your vision and plans for research, and societal engagement, including a focus on how you would lead MISG over the next decade (4-page maximum); (4) a one-page teaching statement; (5) a one-page statement on how you have or plan to contribute to diversity efforts; (6) up to three publications, and (7) a list of three academic references with contact information. Strict confidentiality will be maintained, and no references will be solicited without the prior consent of the candidate.

Review of applications will begin after August 15, 2022 and will continue until the position is filled.

For assistance or further information, please contact SEAS.faculty.search.staff@umich.edu

SEAS is committed to creating and maintaining an inclusive and equitable environment that respects diverse experiences, promotes generous listening and communications, and discourages and restoratively respond to acts of discrimination, harassment, or injustice. Our commitment to diversity, equity and inclusion is deeply rooted in our values for a sustainable and just society.

GEO829

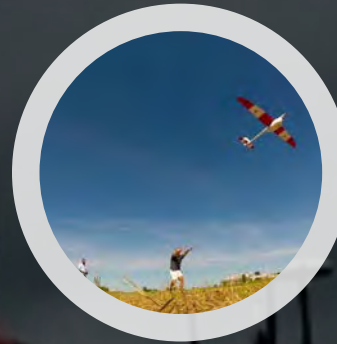
Collection and Analysis of Drone Imagery

- **Course Objectives:**

1. Learn about the utility of UAV in remote sensing applications
2. Learn the FAA protocols for safe UAV utilization
3. Develop research protocols for data collection, processing, and associated field data
4. Learn to fly multiple types of drones including the applications commonly used
5. Understand remote sensing properties of different sensors (thermal, multispectral, hyperspectral, and LiDAR) that can be mounted onboard a drone
6. Preprocess images acquired during fieldwork, specifically using pixs4d
7. Develop appropriate analysis techniques and conduct such analysis

For more information email Erin Bunting
(ebunting@msu.edu)

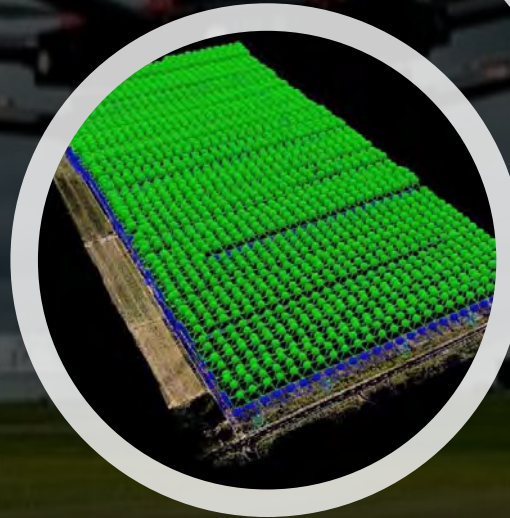
Offered Fall 2022!!



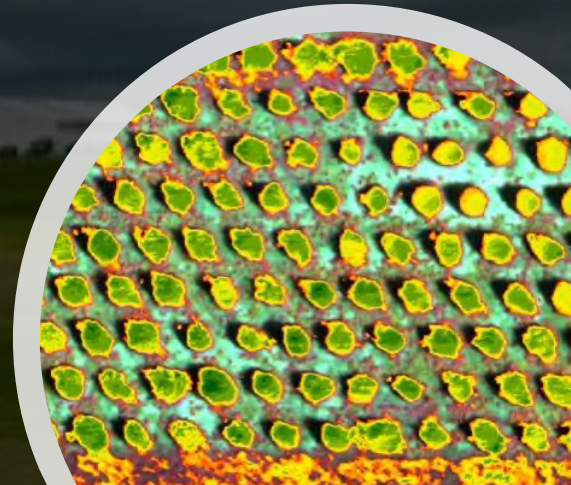
Hands-on Flight Experience



Experience with cutting edge UAV equipment



Data Processing across multiple platforms



Data collection in the field

Testing positive for COVID-19 while abroad: A guide for MSU travelers

Published: 06.02.2022

Below are recommended steps and resources for MSU-sponsored travelers who have tested positive for COVID-19 while abroad. While geared towards those who test within a day of returning to the US – due to the [current US entry requirement of proof of negative test from within a day of travel](#) – this advice can also be helpful to those who test in the middle of their travel.

Please note that [non-US citizens and non-US immigrants are also required to show proof of vaccination](#) to enter the US.

When applicable, additional information is provided for specific travelers – such as Education Abroad students or program directors, non-EA students, or faculty/staff.

Recommended Steps

Step 1: Call ISOS for medical assistance, testing or a doctor’s order	2
Step 2: Rebook your flight.....	2
Step 4: Ensure accommodation and resources for quarantine.....	2
Step 5: Inform MSU and others	3
Step 6: Plan for your return to the US	3
INFO: Quarantine coverage through MSU’s international travel health insurance	4
INFO: EA Program Directors – guidance for students testing positive	5

Step 1: Call ISOS for medical assistance, testing or a doctor's order

[International SOS](#) is MSU's medical and security assistance provider. They have regional offices throughout the world as well as an extensive network of doctors and security experts. ISOS can offer great support with:

- Connecting you with a local provider for a physician-administered COVID-19 test and/or physician's order for quarantine to help with reimbursement (see reimbursement section).
- Helping with the documentation of recovery when you are looking towards going home to the US.
- Connecting you with free mental health counseling.
- Connecting you with a doctor for any medical questions.

Contacting ISOS:

- Tel: +1 215 942 8478
- Identify yourself as a Michigan State University traveler. If needed, you can provide our membership number (11BCAS798617).
- Reference the [ISOS Membership Card](#) for phone numbers of regional offices
- You can also download the [International SOS app](#) (log in with your MSU email, and if prompted, MSU membership # 11BCAS798617) and give them a call or use the chat function in the app.

Step 2: Rebook your flight

Please work through your ticketing agent or directly with the airline. There may be an opportunity for reimbursement for certain ticketing costs – please see section of quarantine coverage.

StudentUniverse – sometimes used for Education Abroad or student flights

- Toll-free within the US and Canada: +1 800 272 9676
- Toll-free within the UK: +0 808 234 4107
- From outside the US, Canada or UK: +1 617 321 3100

Conlin – sometimes used for MSU-sponsored travel

- Phone (24 hrs): +1 517 884 9400
- Phone (Weekdays 8am – 8pm EST): +1 844 434 5026
- Phone International: +1 517 827 2719
- Email: msu@conlintravel.com

Step 4: Ensure accommodation and resources for quarantine

EA students: Please reach out to your on-site staff, whether this is an on-site provider, host institution or your program directors.

- They can provide additional information about quarantine options. If you and your roommate are both positive, you may stay in the same room.
- However, if not, we ask that the person who tested positive for COVID-19 work with their on-site staff on identifying a private room.
- On-site staff can also help direct you to food delivery options, laundry services, etc, to help you take care of your needs during quarantine.

EA program directors: Please work directly with your accommodation provider.

Non-EA travelers: Please work directly with your accommodation provider. If they are not able to provide additional lodging, hopefully they can direct you to other lodging options.

ALL travelers: It might be necessary to change accommodations partway through your quarantine if your current accommodations cannot be extended. Please identify the safest way to travel from one location to another that helps to protect others.

Step 5: Inform MSU and others

ALL travelers: Please inform Global Safety at globalsafety@msu.edu.

- Please let us know if this is an FYI or a request for assistance.
- Please let us know your anticipated return date, and we can update the Global Travel Registry.

EA students: Please inform your on-site staff, whether this is an on-site provider, host institution or your program directors.

- They can assist with arranging quarantine support.
- They can also clarify the academic contingency plan, if applicable, to ensure your ability to complete the course.
- They may be familiar with local guidance and/or resources to help your quarantine.

EA program directors:

Please inform Elizabeth Wandschneider (wandsch@msu.edu), your EA program coordinator, and the EA point person in your college.

Non-EA travelers: Consider informing your department or others to reschedule any in-person work commitments such as classes and to provide greater information about reimbursement options.

- Depending on the nature of your travel, you may be required to cover any expenses that are not reimbursable through insurance.

Step 6: Plan for your return to the US

At this time, the CDC requires that [all international travelers arriving to the US by air](#):

- Show proof of vaccination (non-US citizens, non-US immigrants)
- Show proof of a negative COVID-19 test taken within one day of travel or a documentation of recovery for COVID-19 (all travelers)

ISOS can assist with providing you documentation of recovery, which ascertains that you are fit to travel per CDC guidance.

- The documentation of recovery includes a positive test result and a signed letter from a licensed healthcare provider or public health official which states you have been cleared to travel according to [CDC travel guidance](#).
- This documentation can be issued for anyone having recovered from COVID-19 in the past 90 days.
- CDC guidance states to “not travel until a full 10 days after your symptoms started or the date your positive test was taken if you had no symptoms.” This means that you would be looking to travel on the 11th day after your positive test or your symptoms started.

INFO: Quarantine coverage through MSU’s international travel health insurance

MSU has quarantine coverage through our international travel health insurance, in which all registered MSU-sponsored travelers (faculty, staff and students) are automatically enrolled. The policy number is GLM N10846924.

[MSU international travel health insurance quarantine coverage with Chubb \(see page 1 and 2\)](#) has a maximum limit of \$2000. Covered expenses are:

- a limit of \$150/day for up to 10 days for lodging/meals
- the cost of a one-way economy airfare ticket either home or to rejoin the trip
- non-refundable travel arrangements

In order to seek reimbursement for covered expenses related to COVID-19:

- Simply following public health guidance after a stay-at-home test is not sufficient.
- At a minimum, you will need to submit proof of a physician-administered positive COVID-19 test.
- It is recommended to also submit a doctor’s order for quarantine or a [physician-signed claim form](#) (click link to download) if possible.
- ISOS (see below) can help arrange a visit with a local physician to review your test and, after their review, write a doctor’s order if applicable. You can also ask that they email you a summary of the consultation for additional documentation. This might be a telehealth visit or it might be in-person.
- Please keep your receipts for any medical care related to your diagnosis, and you can submit a reimbursement claim – or if you go through ISOS, they can set up the appointment and pay directly so you don’t have to up front.
- Keep all receipts for anything that might be a covered expense (see above).
- Claims must be submitted within 90 days of incurring the expense. You can [submit a reimbursement claim to Chubb \(scroll down\)](#) with your receipts or you can submit

invoices for direct payment (see specific instructions on the [claim form – click to download](#)). Note that you can still submit the claim form without a physician's signature.

INFO: EA Program Directors – guidance for students testing positive

If you are a program director on an Education Abroad program...

... and a student tests positive for COVID-19 during the program:

- Please refer to your Health & Safety Plan for your academic contingency and quarantine plan.
- Please inform Elke Schmidt (schmi822@msu.edu) and clarify if this is an FYI or if you are seeking assistance.
 - Elke will email you the student resources, including information about free mental health counseling through ISOS.
- Please consider if any other students should get tested as well.
 - Anyone who is fully vaccinated and has been exposed to COVID-19 does not need to quarantine (per CDC COVID-19 exposure guidance) but should get tested at a minimum 5 days later.
 - You can call ISOS (+1 215 942 8478) for information about local guidance.

... and a student tests positive for COVID-19 at the end of program:

- Please refer to the [EA Stay-Behind Policy](#) to see if you or your co-director need to stay behind with the student.
- Please inform Elke Schmidt (schmi822@msu.edu) and Elizabeth Wandschneider (wandsch@msu.edu) with your plan and any requests for assistance.
 - Please do not share any student medical information with those who do not need to know.
 - Please feel free to refer any parent communication to Elke Schmidt (schmi822@msu.edu; +1 517 884 2174).
- Please share the information above regarding a student testing positive for COVID-19 with the student in question. Encourage them to contact Elke Schmidt (schmi822@msu.edu) for additional resources for their quarantine and to extend their registered stay in country, if needed due to quarantine.

2022-23 Nomination (Fall 2022, Spring 2023, Summer 2023) Dissertation Completion Fellowship

Please return completed nomination form, along with supporting materials, by **Friday, July 29, 2022 (5:00 pm)** to: Anna Maria Santiago, Senior Associate Dean for Research and Graduate Studies (SSC.Graduatedean@msu.edu) and Jennifer Abbott, College of Social Science (abbottjs@msu.edu). **Please note that there is ONLY one call for nominations during the academic year.**

Name: PID:
Dept. /School: Email:
Local Mailing Address:

Home Mailing Address:

Local Phone: Home Phone:
Major: Major Professor:
Fellowship Term (indicate term and year):

Please include the following documents with your application:

- An abstract and outline of the dissertation with a one paragraph summary of each Chapter, the specific status of each chapter (*e.g., being revised based on major professor's comments; drafted but not submitted to major professor; not yet drafted*) AND documentation of successful defense of the dissertation prospectus. No more than 6 pages.
- Include documentation of IRB approval for the dissertation.
- A work plan with schedule for completion of the dissertation (students who are unlikely to finish in the semester of the fellowship are at a disadvantage for receiving the award). Include information about the semester you will be seeking the 1 credit tuition waiver from the College.
- A letter of support and a statement of progress by the major professor. The letter should also provide details about the student's current level of funding within and outside of the University.

Signature of Nominee/Date

Signature of Chairperson/Director
Endorsing this Nomination